



34 Park Road

, Mexborough, S64 9PE

Chain Free £150,000



Immaculately presented and ready for immediate occupation, this deceptively spacious stone-fronted three-bedroom mid-terrace home has been tastefully renovated to a high standard. Recent improvements include a contemporary fitted kitchen, stylish décor throughout, and new carpets, creating a modern yet welcoming living environment.

Situated in the heart of Mexborough on the ever-popular Park Road, this substantial family home is a must-view. Ideally located within easy reach of major link roads, public transport routes, and a wide range of local amenities, the property offers both convenience and refined everyday living.

MUST BE VIEWED!



GROUND FLOOR

LOUNGE

A well proportioned lounge offering a warm and inviting atmosphere, enhanced by a bay-style double-glazed window. The room features a radiator for comfort, with elegant double doors opening into the dining room, while a further door provides access to the staircase.

DINING ROOM

The dining area continues the sense of space and warmth, flowing seamlessly into the open-plan kitchen area. A charming feature inset fireplace with a wooden beam surround creates a striking focal point, adding character and appeal. A door provides access to the cellar, offering additional storage or potential use.

This versatile space can be enjoyed as a cosy, defined dining room or opened fully to the lounge, creating an impressive open-aspect layout —perfect for family gatherings and entertaining, especially during the festive season.

KITCHEN

The kitchen has been recently refitted and is fitted with a range of contemporary wall and base units, complemented by coordinating worktop surfaces incorporating a sink unit with mixer tap. Integrated appliances include an oven, hob, and extractor unit, with additional space provided for a fridge freezer and washing machine.

A rear-facing double-glazed window allows for plenty of natural light, while elegant French-style doors open directly onto the garden, seamlessly connecting indoor and outdoor living.

CELLAR

Ideal for storage.

FIRST FLOOR

LANDING

BEDROOM ONE

A generously sized bedroom featuring a front facing double-glazed window, allowing for ample natural light, and a radiator providing year-round comfort.

BEDROOM TWO

A well-proportioned second bedroom featuring a double-glazed window and a radiator, offering a bright and comfortable living space.

BEDROOM THREE

In our opinion, a generously sized third bedroom featuring a rear-facing double-glazed window and a radiator, providing a comfortable and versatile space.

FAMILY BATHROOM

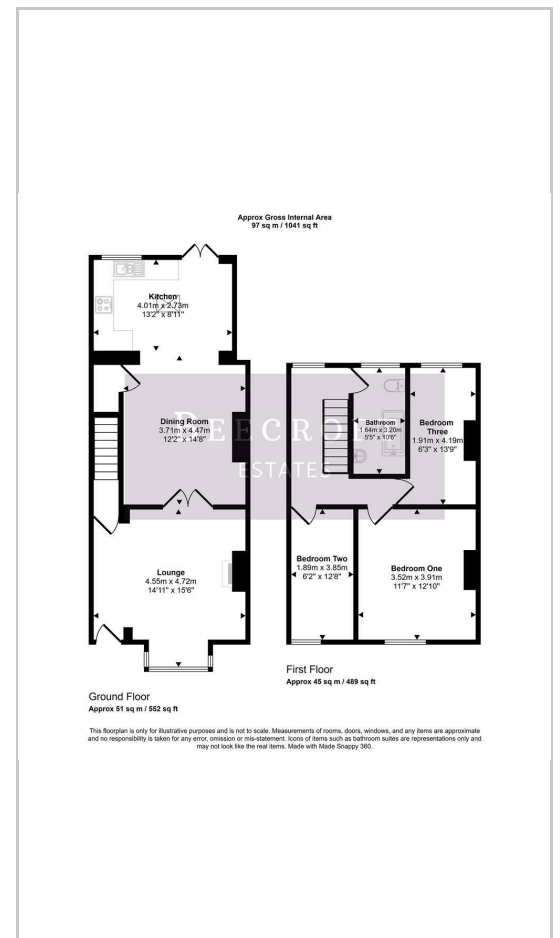
The bathroom is fitted with a stylish three-piece suite comprising a freestanding bath, vanity-style wash hand basin, and WC. Additional features include an obscure-glazed window for privacy and a contemporary chrome heated ladder rail.

OUTSIDE

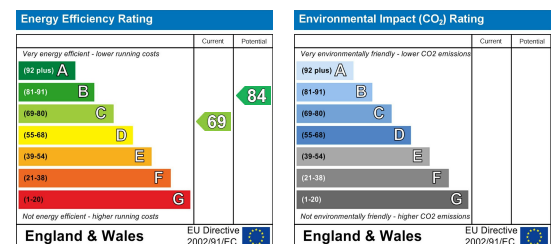
Area Map



Floor Plans



Energy Efficiency Graph



These particulars, whilst believed to be accurate are set out as a general outline only for guidance and do not constitute any part of an offer or contract. Intending purchasers should not rely on them as statements of representation of fact, but must satisfy themselves by inspection or otherwise as to their accuracy. No person in this firm's employment has the authority to make or give any representation or warranty in respect of the property.

Wombwell 6-8 Park Street, Wombwell, S73 0DJ

Tel: 01226 340110 Email: info@beecroftestates.co.uk www.beecroftestates.co.uk